



University of
New Hampshire

Library

Engaging with data creators and users to foster a culture of data sharing and reuse

PATRICIA CONDON

RESEARCH DATA SERVICES LIBRARIAN
UNIVERSITY OF NEW HAMPSHIRE
PATRICIA.CONDON@UNH.EDU

THE DATAONE
WEBINAR SERIES

TUESDAY, APRIL 11, 2017

Opportunities & Challenges

Culture of data sharing and reuse

Campus Culture

- Institutional policy on data sharing
- Disciplinary differences of data sharing & reuse
- Levels of researcher comfort submitting data to repositories
- Reuse of data for undergraduate/graduate thesis

Library Culture

- Library expertise in data reference
- Library support for working with data
- Library services in data publication and archiving

Opportunities & Challenges

Engaging with data creators and users

- Slow & Steady
- Messaging
- Education & Training
- Collaboration

Slow & Steady

Acknowledging that engaging with data creators and users to foster a culture of data sharing and reuse is about revolutionizing the culture of research



Messaging

Adapting how we talk about data sharing and reuse so that it is more meaningful to data creators and users



Education & Training

Providing data creators and users with the skills and knowledge they need to reuse and share data responsibly



Collaboration

Teaming up with campus partners - some of which may be different than partners for developing data management services and infrastructure





University of
New Hampshire

Library

Thank you!

Patricia Condon

Research Data Services Librarian

University of New Hampshire

patricia.condon@unh.edu

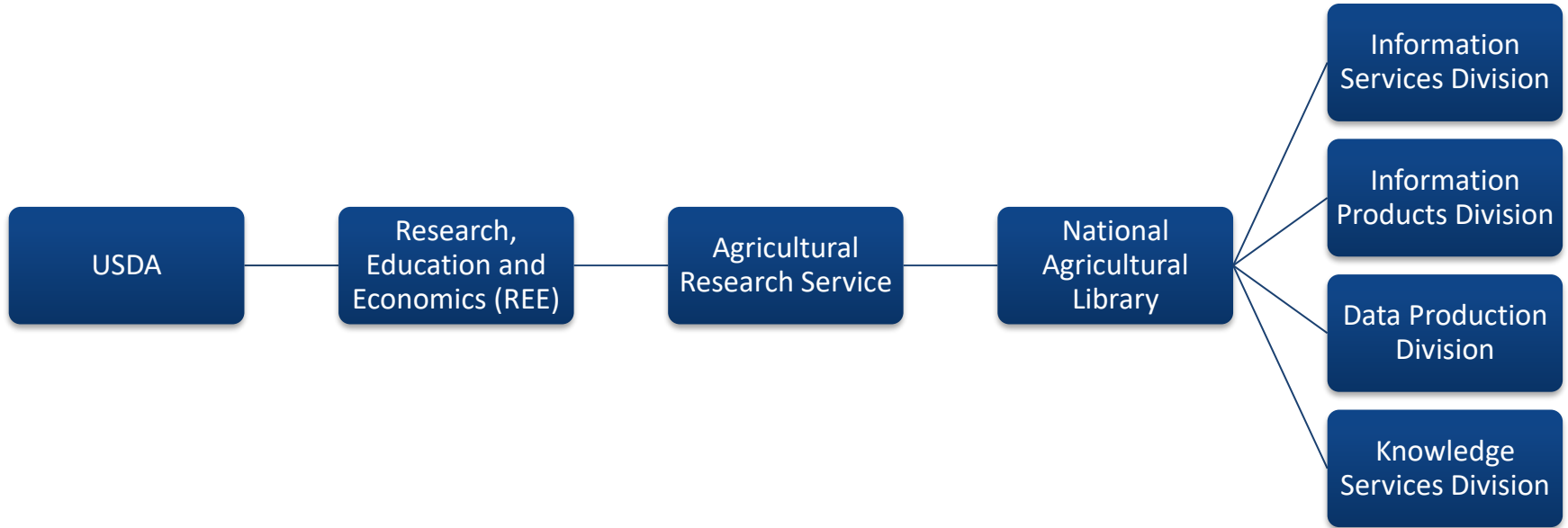
Data Curation at the National Agricultural Library

Adam Kriesberg, PhD

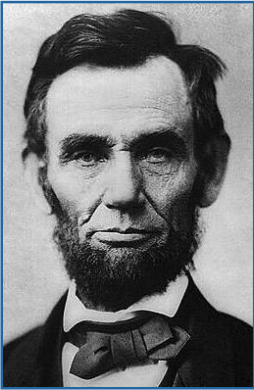
DataONE Webinar: Engaging with data
creators and users to foster a culture of
data sharing and reuse

April 11, 2017

Current NAL Organizational Overview



Establishment of NAL: Prioritization of Information Dissemination and Preservation



1862

That it shall be the duty of the Commissioner of Agriculture to **acquire and preserve in his department all information concerning agriculture which he can obtain by means of books and correspondence and by practical and scientific experiments ...**

An Act to Establish a Department of Agriculture,
Sec. 520 [7 U.S.C. 2201] Enacted May 15, 1862

“Library-Mediated Collaborations: Data Curation at the National Agricultural Library”

- Motivation: Information professionals (e.g. archivists and librarians) are increasingly called upon to engage further upstream in the research lifecycle.

Library-Mediated Collaborations

- Research Question: How do information professionals at NAL mediate data curation collaborations?

Data Curation at NAL

- The Knowledge Services Division is the primary data curation group at NAL.
- Four primary projects in the division highlight the range of approaches to data curation embodied in the organization, and different types of reuse facilitated for different user communities.

Summary of NAL Collaborative Projects

	i5k	LTAR	LCA	ADC
Scientific Field	Insect genomics	Agro-ecology	Life Cycle Assessment	All agricultural science
Types of Data	Gene sequences	Meteorological instruments, hydrology, ecological data	Unit processes for use in model construction	Inclusive of research data from agricultural sciences
Collaborative Nature of Project	Facilitates collaboration for users through sharing of gene annotations. Project grew out of relationship between USDA researchers and international community of insect genomics researchers.	NAL serves as data curation organization for network of 18 research sites maintained by USDA and land grant universities.	Following the success of the initial project, NAL partnering with 2 other federal agencies (Department of Energy and Environmental Protection Agency) to develop federal LCA Commons, uniting access to public LCA data.	Infrastructure building project that promises to lead to additional collaboration between NAL and agricultural researchers, inside and outside of the government.

Library-Mediated Collaborations

- Library-mediated collaborations are the strategies that libraries employ to become and remain involved in data curation projects.

Library- Mediated Collaborations: Findings

- Three strategies of collaboration emerged from our study:
 - Organizational Collaboration
 - Collaboration in System Design
 - Facilitation of Collaboration

Implications: Questions for Potential Collaborators

1. At what stages of the data lifecycle is the library involved in collaboration around research data?
2. What is the position of the library in relation to users of research data?
3. What is the level of resource commitment for the library in this collaboration?
4. What are the outcomes and benefits of collaboration for the library, data producers, and users?

Data Curation at the National Agricultural Library

Thank you!

For more data curation and NAL, see
<http://muse.jhu.edu/article/653641>

akriesbe [at] umd [dot] edu